

NCS Industrial PCs

Committed to excellence since 1975

Micron-II FANLESS

Industrial and Marine Systems

2

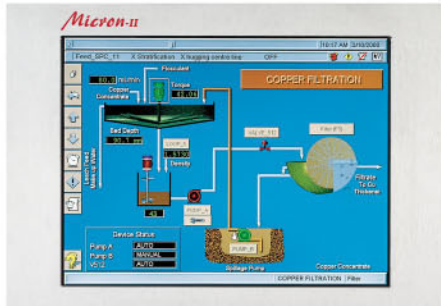
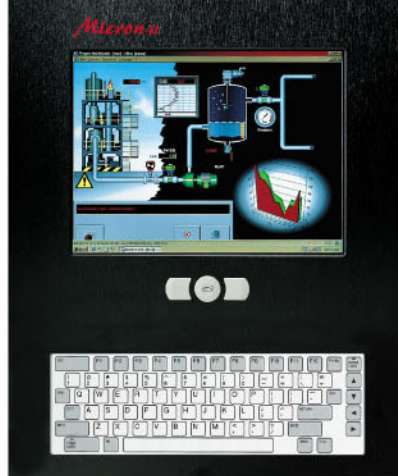
N.C.S. Computer Group have been leaders in Industrial and Marine Automation since 1975, is pleased to announce new Computer for industrial applications the "Micron-II FANLESS" also with the O.S. XP Embedded!

The "Micron-II" combines all the basic features of a PC in a compact package measuring 280X203X86 mm. Features include an embedded **LOW POWER 733 MHz processor**, rugged 2.5 Inch notebook hard drive or **Flash Disk up to 6 Gb**, internal power supply, up to **512 Megabytes** of DRAM, **PC/104** expansion, external floppy drive connector, Parallel port, **3 serial port RS232**, **1 serial port RS485/RS232**, PS/2 keyboard port, mouse port, **USB, AUDIO** and **ETHERNET (RJ45)**. This technology is packaged with an attractive membrane keypad with full alpha-numeric on an IP65 (NEMA 4) front bezel **with a 250 NIT TFT flat panel of 12.1" SVGA (800 x 600)**! As an OEM product, NCS can customize the product for use in different applications. The bezel can be without keyboard a custom color with the customer's logo. Options include 85-265Vac auto-ranging, +12 VDC or +24VDC input power supply. Another exciting feature is its compactness. The depth of the unit is only **3.35 inches!** The rugged nature of the Micron-II PC is highlighted by an MTBF of 40,000 hrs and a NEMA 4 protected front panel. NCS stands behind its Micron-II PC by offering a limited **3 years warranty** on its electronics (**1 year on the TFT/HDD/TS**). The combination of technology, reduced form factor and ruggedization make it an ideal candidate for all types of applications, including Man Machine Interface, Control consoles, Industrial control systems and SCADA. Software support for the Micron-II PC includes full Microsoft compatibility. Full PC compatibility including expansion allows the use of commercially available

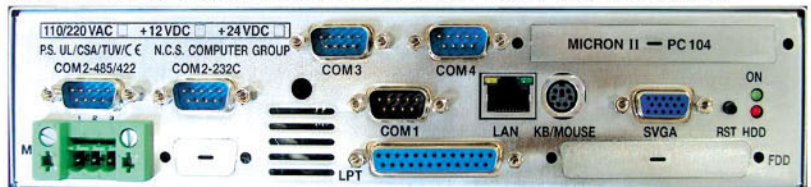
Industrial software packages and PC/104 add-on cards. This product is extremely useful with legacy HMI software applications running in a DOS, Windows **XP EMBEDDED** or WIN9x/NT/2000/XP environment. Its size allows easy upgrades to existing machine applications. "The Micron-II PC is attractive for OEM applications due to its completeness", says Peter Nelson of NCS. "A manufacturer can easily integrate the Micron-II PC into existing machines. This can be done at a sensible cost within a reasonable amount of time. An OEM can also easily add the Micron-II to his system without costly expensive panels and pendant arms. We also understand that as an OEM product, private labeling is important and available."

**AVAILABLE WITH
TFT 10/12/15/17/22"
and O.S.
DOS/WIN9x/NT/XP/XP
EMBEDDED™**





MICRON-II FANLESS SYSTEM side connectors



SPECIFICATIONS BOARD

- CPU: P-III class VIA Eden ESP ESP4000/5000/6000 733MHz low-power fanless CPU 5W, 128K L1 cache & 64K L2 cache, 100/133 FSB, 0~85 °C.
- System chip: VIA VT8606 (PN133T Twister-T) & VT82C686A/B.
- Cache memory: 128K L1 Cache & 64K L2 Cache built in CPU.
- BIOS: Award/AMI BIOS, 256KB (Flash) EPROM **BOOT FROM USB FDD/HDD/CD-ROM.**
- MEMORY: 1 x 144-pin DIMM socket support memory up to 256MB PC133/PC100 SDRAM/ VCM-SDRAM.
- AGP-4X LCD/ LVDS/ CRT: AGP-4X Savage4 3D/2D LVDS/TFT/DSTN LCD/CRT W/ 8M~32M SMA memory share system memory as display memory), support 1600x1200 TFT/DSTN/LVDS (2-channel 110MHz) LCD 1920x1440 2D/3D CRT. Also support 16:9 display (resolution 848x480 and 1280x768).
- DVD: Hardware-Assisted MPEG-2 architecture for DVD full-screen video playback.
- 100/10M Ethernet: Realtek 8139C LAN x 1, or Intel 82559 LAN x 1 - **BOOT FROM LAN FUNCTION.**
- Optional AC97 audio: AC97 audio daughter board.
- CMOS Backup: CMOS Backup by Li battery.
- IrDA and USBx2: USB and IrDA pin header on board.
- Temperature / fan monitoring: 686B on-chip function.
- CompactFlash II socket: Support CF I / II type IDE Flash Disk or IBM 340MB/1GB MicroDrive HDD. (optional).
- Keyboard & Mouse connector: 6-pin Mini-Din connector
- BUS TYPE: PC/104 socket.
- Speaker: Buzzer on Board.
- Digital I/O: 4-bit DI and 4-bit DO, TTL level.
- WATCHDOG: Programmable 0 ~ 256 sec.
- ATA100/66/33 IDE Port x 1: Up to 2 x IDE devices for HDD and/or FLASH DISK (DOM).
- FDD: Two 3.5" or 5.25" FDD or LS120.
- Serial Port x 4: RS-232 x 3 + RS-232/422/485 x 1(+5v/+12v Power Output in Pin1 or Pin9 via jumper setting, TTL-level Reserved in COM2).
- PARALLEL PORT: Bi-directional SPP/EPP/ECP port.
- Board Power Requirement: +5V & +12V or Single +5V by 4-pin power connector - ATX power control pin.
- DMA CHANNELS: 7* INTERRUPT CONTROLLERS: 82C59 X 2 * INTERRUPT LEVELS: 15.
- OPERATING TEMPERATURE: 0 to 60 °C (140F) and 0-85 °C CPU support fanless application.

SAFETY PRECAUTIONS

Follow the messages below to avoid your system from damage.

- 1) Avoid your system from static electric power on all occasions.
- 2) Stay safe from the electric shock. Don't touch any components of this card when the power is ON. Always disconnect power when the system is not in use.
- 3) Remove power when you change any hardware devices. For instance, when you connect a jumper or install any cards, a surge of power may damage the electronic components or the whole system.

N.C.S. Computer Italia S.r.l. Tel. 0331-263975 Fax 0331-263978

www.ncs-computer.com www.ncscomputer.191.it sales@ncscomputer.191.it

NCS COMPUTER GROUP RESERVES THE RIGHT TO MAKE CHANGES AND MODIFICATIONS IN THE SPECIFICATIONS WITHOUT PRIOR NOTICE AND ASSUMES NO LIABILITIES ARISING FROM THE APPLICATION OR USE OF ANY PRODUCT DESCRIBED HEREIN. NCS COMPUTER GROUP ASSUMES NO OBLIGATION TO CORRECT ANY ERRORS HEREIN CONTAINED.